



emitec
industrial

Emitec Messtechnik AG
Birkenstrasse 47
6343 Rotkreuz

+41 41 748 60 10
info@emitec.ch
www.emitec-industrial.ch

Emitec Group
#1 in Test & Measurement, worldwide.

QCAM5

STARTER GUIDE

Compatible with Macq Mobility Manager

Everything you need to know
to get up and running with
this Smart Camera.

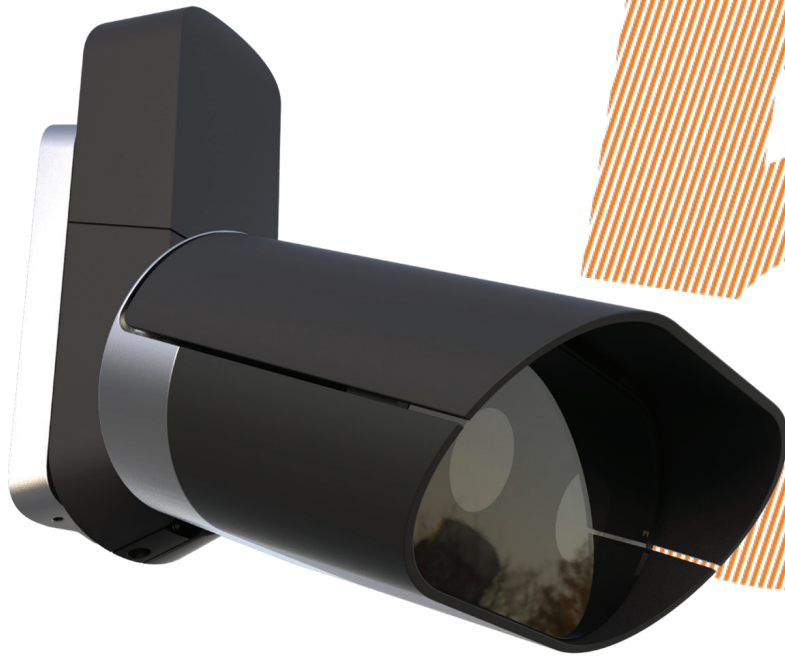


TABLE OF CONTENTS

1. Introduction
2. Technical information
3. Installation



THE QCAM5

Our next generation AI based ANPR camera

Integrating the latest **cutting-edge technologies** (deep learning-based algorithms), the QCAM5 ANPR camera delivers unprecedented number plate recognition capabilities. Additionally, its outstanding image resolution and a **unique set of functionalities** designed to provide further vehicle characterization makes this product the “best in class” within its category.

The QCAM5 camera can operate on **1, 2, 3 or 4 lanes** and is able to differentiate **all kind of vehicles** (e.g. cars, trucks, busses, motorcycles, bicycles, trams, etc.), **objects and persons**.

Moreover, it also integrates in option a **“Make & Model”** recognition feature, as well as a **“vehicle color”** characterization. Both features are invaluable in finding vehicles and closing the current gap in similar product offerings, as these features, when available, typically require additional hardware and software.

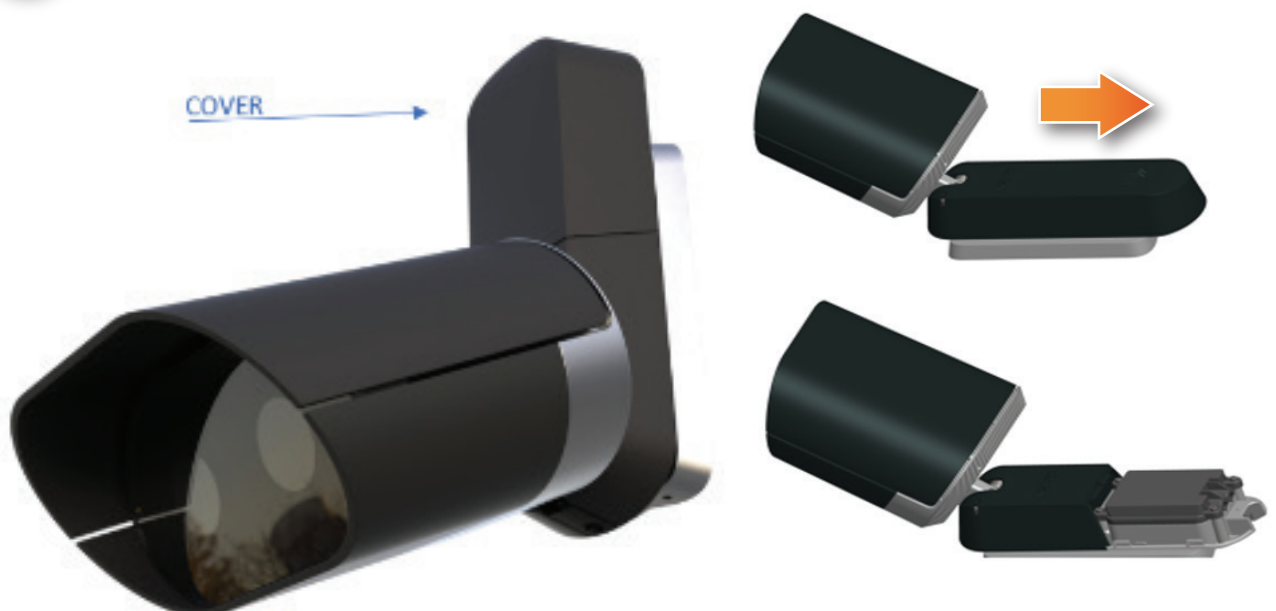
The QCAM5 camera is also able to calculate an **instantaneous speed estimate** for each vehicle travelling within its field of view.

1. TECHNICAL INFORMATION

Power Supply	24V DC, 2.5A
Connection	RJ 45
Time Synchronization	NTP or GPS
Communication Protocol	Web server & TCP/IP
Storage SSD	256 GB
Operating Temperature	-25°C to + 70°C
Operating Humidity	10% to 95%
Dimensions	190 x 110 x 196 mm ³ (camera only)
Weight	3.8 kg

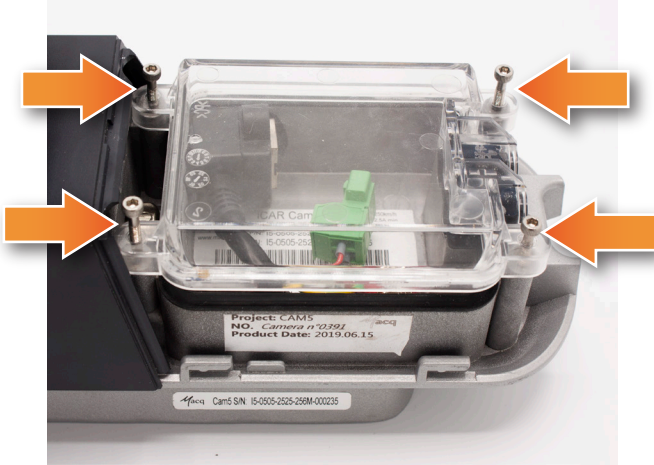
2. INSTALLATION

- 1** **Open the cover** (slide the housing fixture cover upwards, a screw driver is not needed).

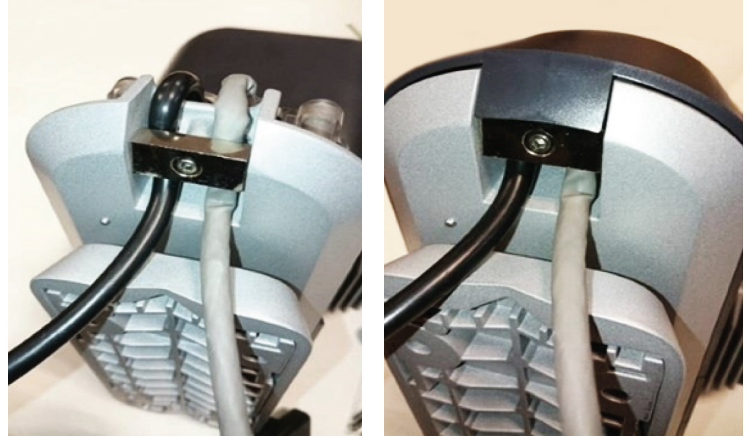


2 - Installation

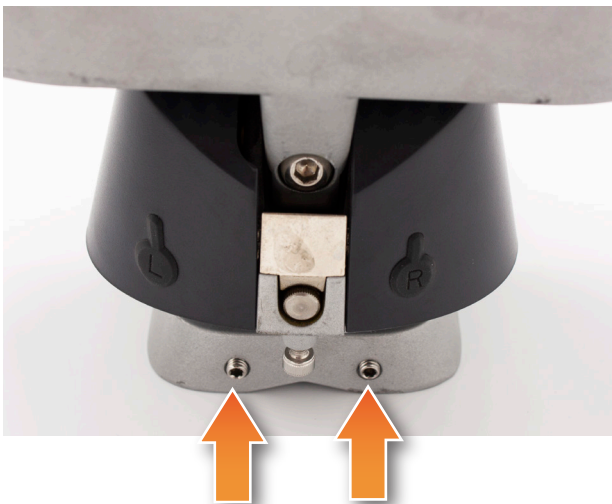
- 2** **Unscrew the 4 screws** (of the transparent cover).
Connect the RJ45 and the power supply.



- 3** **Mount the power supply and RJ45 cables** as shown in the pictures below.



- 4** **Unscrew the 2 screws** (HEX 2,5) to unlock the back plate.



- 5** **There are 2 options to fix the camera to a support:**

- Fix the back plate with 4 screws (stainless steel \varnothing 6mm with a torque 7.5 N/m class 8.8)
- Use 2 stainless steel bands (width 9,5mm ; thickness 0,68mm type « Band it » REF FDS01215 + 2 clamps FDS01226.) (see arrows)



