

FIDO® X2

Ultra-Lightweight Explosives Trace Detector



The Fido X2 is an ultra-lightweight, handheld explosives trace detector (ETD). It provides an unprecedented combination of sensitivity, speed, and ease of use. Its award-winning TrueTrace™ technology detects threats with higher sensitivity and faster clear-down than similar products. Fido X2 performs fast ten-second analysis and provides cost-effective operation with reusable sampling swipes. On-device video training provides real-time help and reduces the cost and logistical burden of recurrent training. With thousands of units fielded in over 40 countries, Fido X-series products are the most trusted handheld ETDs for critical security applications.

FAST, TRUETRACE DETECTION

Enables rapid threat screening in sporting arenas, mass transit facilities, hotels, private venues, and other critical infrastructure

- Fast three-minute start-up
- Analysis in less than ten seconds
- Rapid clear-down within seconds
- No radioactive source or hazardous materials

BEST-IN-CLASS SENSITIVITY

Patented TrueTrace technology detects explosives with better sensitivity than similar products

- Broad, class-based identification
- Detects multiple types of homemade, commercial, and military explosives with a single sample
- More sensitive than other products in its class
- Reusable sampling swipes, vapor detection capability

SIMPLE, GUIDED OPERATION

Guided user interface aids the operator with sampling and decision-making

- On-screen prompts
- Simple go/no-go alarms
- On-device video training
- Ultra-lightweight <1.5 lbs (680 g)



SPECIFICATIONS
Fido X2

Technology TrueTrace™; multi-channel fluorescence technology; no radioactive source

Sampling & Analysis

Sample Introduction Sampling swipes for surfaces; vapor sampling with optional accessory

Sample Phase Trace particulate and vapor

Threats Detects homemade, commercial, and military explosives

Sampling & Analysis Analysis ≤10 seconds

System Interface

Display & Alerts Visible, audible, and haptic (vibration) alerts; vivid, sunlight-readable color display (32k colors)

Localization Language translation available worldwide

Communication USB 2.0 (Mini-USB)

Data Storage 10,000 discrete files; First-in, First-out (FIFO) automatic overwrite

Data Management On-device report generation; export to mass storage

User Levels Operator

Power

Input Voltage 100-240 VAC (wall adapter supplied); runs device and charges battery simultaneously

Battery Specs Rechargeable and swappable Li-ion battery; adapter included

Startup Time 3 minutes from cold

Environmental

Operating Temperature 32 to 113 °F (0 to 45 °C)

Operating Humidity 5% to 95% non-condensing

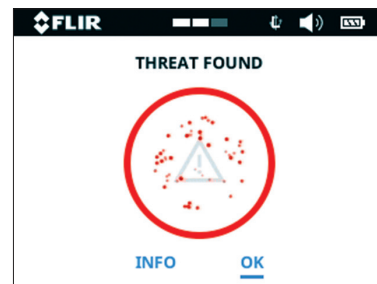
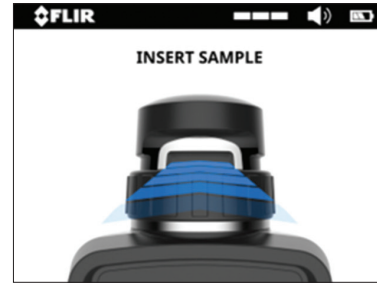
Storage Temperature 14 to 122 °F (-10 to 50 °C)

Physical Features

Dimensions (L x W x H) 12.7 x 3.9 x 2.8 in (32.2 x 10.0 x 7.2 cm) - with swab desorber and battery (standard model)
10.6 x 4.1 x 2.8 in (27.0 x 10.5 x 7.0 cm) - with vapor sampling accessory and battery

Weight 1.5 lbs (680.4 g)

Enclosure & Protection Flame retardant PC-ABS alloy with aluminum reinforcements



Specifications are subject to change without notice.
For the most up-to-date specs, go to www.teledyneflir.com

AMERICAS

7055 Troy Hill Dr. Suite 300
Elkridge, MD 21075 USA

APAC

10 Kallang Avenue #09-10
Aperia Tower 2
Singapore 335910

EMEA

Luxemburgstraat 2
2321 Meer
Belgium



Emitec Messtechnik AG
Birkenstrasse 47
6343 Rotkreuz

+41 41 748 60 10
info@emitec.ch
www.emitec-industrial.ch



Emitec Group  #1 in Test & Measurement, worldwide.