

Application Note / CA0010 & Receivers

On CISPR 14-1 Ed. 6.0 Discontinuous Disturbance Narda Click Analyzer

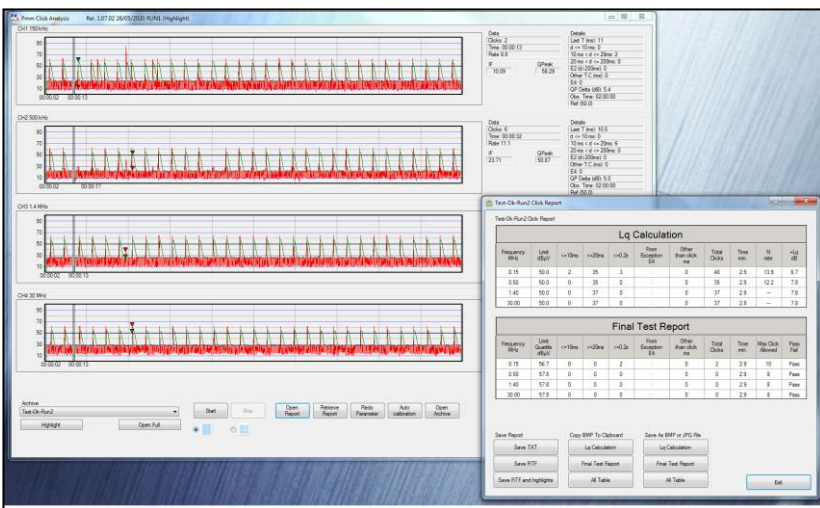
PMM solutions respect both the latest and previous standard revisions.

Standard Revision

Starting from April 2020 the Requirements for household appliances, electric tools and similar apparatus - Part 1 CISPR 14-1 Emission Ed. 5.0 have been replaced by CISPR 14-1 Ed. 6.0.

This application note briefly compares the two editions and clarifies how the PMM CA0010 is compliant to the latest changes leaving the user the possibility, for study purposes, to test the device under test even with the previous one.

At 5.4.2.1, concerning the observation time, Ed. 6.0 states that if the measurement of the clicks is carried out simultaneously at 150 kHz and 500 kHz, it is sufficient to register 40 clicks at only one of the two frequencies. This means that, unlike Ed. 5.0 for which the click measurements were managed independently for the two frequencies, the first RUN is stopped as when 40 clicks are registered at either of them.



PCA SW CISPR 14-1 Ed. 6.0 feature

At 5.4.3.3, concerning the combination of disturbances in a time frame less than 600 ms, Ed. 6.0 allows the exceptions for which a series of discontinuous disturbances may be considered as one click only once for all apparatus. Indeed now is:

- once per program cycle, for program controlled equipment, or

- once per minimum observation time, for all other equipment.

At 5.4.3.4, concerning instantaneous switching, Ed. 6.0 relaxes the requirements of Ed. 5.0 and states that the conditions shall be verified only at one of the two frequencies, 150 kHz and 500 kHz, at which the higher rate occurs. In the past edition each frequency was managed separately.

Narda Click Analyzer

The CA0010 Click Analyzer, in conjunction with the 9010F EMI CISPR receiver with release FW 1.95 or higher, is compliant with the recent CISPR 14-1 Ed. 6.0 and in case of need, with a specific command, can fulfil even the requirements of the previous Ed. 5.0.

Conclusion

CA0010 is compliant with the Standard CISPR 14-1.



emitec industrial

Emitec Messtechnik AG
Birkenstrasse 47
6343 Rotkreuz

+41 41 748 60 10
info@emitec.ch
www.emitec-industrial.ch

Emitec Group #1 in Test & Measurement, worldwide.

Sales
Via Rimini, 22
20142 Milano - Italy
Phone +39 0258188 1
Fax +39 0258188273

Narda Safety Test Solutions S.r.l.
E-Mail: nardait.support@narda-sts.it
Internet: www.narda-sts.it

Headquarters
Via Benessea, 29/B
17035 Cisano sul Neva (SV) - Italy
Phone: +39 0182 58641
Fax: +39 0182 58640