



Orglmeister
Infrarot-Systeme

PYROsmart® pro

Technological leader in
infrared early fire detection

PYROsmart® has already proven its worth in many industries for providing the earliest possible detection of fire hazards. PYROsmart® pro uses state-of-the-art infrared and video cameras to continuously scan large areas and objects, measure temperatures and create continuous panoramic thermal imaging.

Potential fire hazards can then be detected as they develop and before a fire starts. When critical temperatures are detected, the system locates the hotspot, triggers an alarm and reports it to a fire alarm control panel. Automatic precision cooling and/or targeted extinguishing of the hotspot is also optionally available.

PYROsmart® pro is a pan/tilt system to enable monitoring of much larger areas than fixed systems are capable of.



Automatic targeted extinguishing
– controlled by PYROsmart®

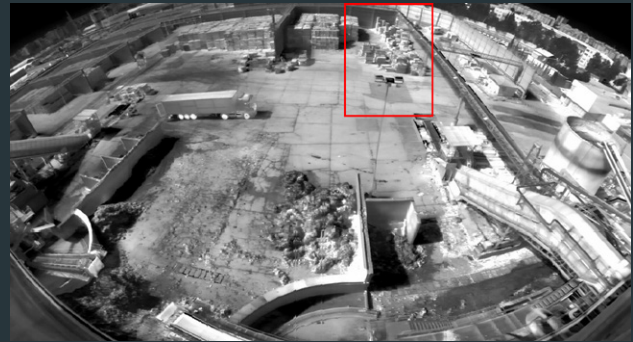
In the event of an alarm, the PYROsmart® extinguishing software controls targeted extinguishing via fire-monitor extinguishers from all major manufacturers – dynamically adaptable and automated. Hotspots can then be cooled with pinpoint accuracy before fires start, and early-stage fires can be quickly extinguished and collateral damage prevented. Unaffected areas remain protected and operational interruptions are minimized.



Keeping the overview with panoramic thermal imaging and live video

Patented PYROsmart® panoramic thermal imaging enables entire monitored areas to be displayed in one view. Detected hotspots are precisely localized based on the space's geometrical data and output as an alarm to a fire alarm control panel.

Switching between infrared and video images is possible and improves assessing potential fire hazards. Displaying interim levels is also very simple. The video camera's 14x zoom function enables objects to be viewed in greater detail whenever required.



Infrared panoramic thermal imaging in false-color representation. The overall image is put together from multiple individual scans.



Benefits and advantages

- Early detection of potential fire hazards
- Autofocus enables monitoring of objects at varying distances (e.g., bunkers with varying fill quantities)
- Also deployable in dusty environments
- Precise localization of dangerous hotspots
- Fully automatic control of targeted cooling and/or extinguishing
- Minimum use of extinguishing agents
- Transparent operation and option for early intervention by organizational fire protection already at pre-alarm stages
- Complete thermal documentation
- Automated event logging and alarm forwarding

PYROsmart® – properties and characteristics

	PYROsmart® pro	PYROsmart® eco	PYROsmart® one
Areas of application	indoors & outdoors, large areas	indoors, medium sized areas	small areas, conveyor systems
Autofocus (infrared autofocus)	✓	✗	✗
Video camera with zoom	✓	✗	✗
Fully tiltable	✓	✓	✗
Panoramic evaluation/display	✓	✓	✗
FACP compatible alarm outputs	✓	✓	✓
Extinguishing control	✓	✓	✓
VdS device approval	✓	✓	undergoing certification
Permissible ambient temperatures	-25° C – 70° C	-25° C – 70° C	-25° C – 70° C
Dimensions (height x width x length) / weight	39 x 24 x 39 cm / 7,7 kg	39 x 24 x 39 cm / 7,3 kg	16 x 16 x 24 cm / 3,3 kg

Early detection of critical temperatures is better than fire detection. This makes all the difference in professional fire protection.

