



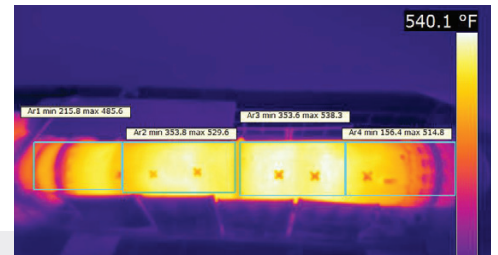
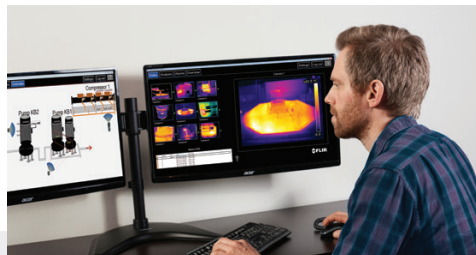
THERMAL SMART SENSOR CAMERA

FLIR A400/A700™ SERIES



The FLIR A400/A700-Series, when configured for Smart Sensor capabilities, offer advanced thermal imaging paired with edge computing and industrial internet of things (IIoT) for simplified inclusion in new or existing networks. With multiple field-of-view choices, motorized focus control*, and unrivaled network connectivity, these automation cameras can tackle the most complex remote monitoring, alarming, and analytics objectives. Automation system solution providers get a running start with a camera that is easy to add, configure, and operate in HMI/SCADA systems. Optimize Process Control and improve quality assurance through inline thermal inspections. Identify abnormal conditions before a failure so maintenance doesn't impact uptime. FLIR A400/A700-Series cameras offer unmatched power and flexibility in thermal monitoring for improved product quality, productivity, maintenance, and safety.

www.flir.com/A400-A700-Smart-Sensor



FLEXIBILITY FOR EASIER INTEGRATION

Unrivaled network connectivity and built-in computing options

- Superior connectivity* through features such as Wi-Fi[†], Modbus TCP, and Ethernet/IP—all of which simplify integration into HMI/SCADA systems
- ONVIF[‡] accommodates standard security VMS and NVR solutions, including control of pan/tilt*
- Prepares for digitalization through MQTT protocol
- Integrates easily into web services with the REST API over XML or JSON



*Advanced †Optional ‡Model-dependent

FLIR INNOVATIONS FOR SMARTER RESULTS

Tailor thermal imaging monitoring for any site's unique requirements

- Improves definition of areas of interest and object analysis with features like the polygon line function*
- Increases accuracy through external black-body correction function*
- Superior I/O control via Modbus TCP Master* enables integration with industrial automation systems using analog and digital control
- Compressed radiometric streaming* cuts bandwidth by 90%, making it possible to connect cameras and share data via Wi-Fi[†]

WORLD-CLASS THERMAL IMAGING CAPABILITIES

Designed with the features to deliver consistent, accurate results

- Provides superior image quality with up to 640 × 480 (307,200) thermal pixel resolution[†]
- Offers a high measurement accuracy of ±2°C
- Improves temperature accuracy for objects near and far with precision motorized focus
- Increases contrast in even-temperature scenes and enhances edge detail in low light using FSX[®] (Flexible Scene Enhancement)* technology

SPECIFICATIONS

Image and Optical Data	Standard Config.	Advanced Config.
IR resolution	320 × 240 (A400) or 640 × 480 (A700)	
Visual resolution*	1280 × 960	
Thermal resolution	<30 mK to <50 mK, lens dependent	
Lenses	14°, 24°, and 42°	
IR Camera Focus	One-shot contrast, motorized, manual	
Measurement		
Object temperatures	-20°C to 2000°C (-4°F to 3632°F), 3 ranges	
Accuracy	±2°C (±3.6°F) or ±2% of reading	
Measurement analysis		
Standard functions	10 spotmeters, 10 boxes, 3 Deltas, 1 isotherm, 1 iso-coverage, 1 reference temperature	10 spotmeters, 10 boxes & mask polygons, 3 Deltas, 2 isotherm, 2 iso-coverage, 1 reference temperature, 2 lines, 1 polyline
Automatic hot/cold detection	Max./min. temperature value and position shown within box	
Scheduled response	sftp (image), SMTP (image and/or measurement data/result)	
Measurement frequency	Up to 10 Hz	
Measurement result read-out	Yes; common protocols include Ethernet/IP, Modbus TCP, MQTT, and REST API	
Alarm		
Alarm function	On any selected measurement function; digital in; internal camera temperature	
Alarm output	Yes: common output includes e-mail, EtherNet/IP, Modbus TCP, and RESTful API	
Video streaming, RTSP protocol		
Unicast	Yes	
Multicast	Yes	
Multiple image streams	Yes	
Video stream 0		
Source	Visual, IR, MSX®	
Contrast enhancement	FSX®, histogram equalization (IR only)	
Overlay	With, without	
Pixel format	YUV411	
Encoding	H.264/MPEG4/MJPEG	

Video stream 1	Standard Config.	Advanced Config.
Source	Visual	
Overlay	No	
Pixel format	YUV411	
Encoding	H.264/MPEG4/MJPEG	
Radiometric streaming		
Source	–	IR
Pixel format	–	MONO 16
Encoding	–	Compressed JPEG-LS; FLIR radiometric
Ethernet		
Interface	Wired; Wi-Fi*	
Connector types	M12 8-pin X-coded, female; RP-SMA, female	
Ethernet type & standard	1000 Mbps, IEEE 802.3	
Ethernet power	Power over Ethernet, PoE IEEE 802.3af class 3	
Ethernet protocols	Include EtherNet/IP, Modbus TCP, and MQTT	
Digital input/output		
Connector type	M12 Male 12-pin A-coded (shared with ext. power)	
Digital input	2× opto-isolated, Vin (low) = 0-1.5 V, Vin (high) = 3-25 V	
Digital output	3× opto-isolated, 0-48 VDC, max. 350 mA (derated to 200 mA at 60°C). Solid-state opto relay, 1× dedicated as fault output (NC)	
Power system		
Connector type	M12 Male 12-pin A-coded (shared with Digital I/O)	
Power consumption	7.5 W at 24 V DC typical; 7.8 W at 48 V DC typical; 8.1 W at 48 V PoE typical	
Wi-Fi*		
Connector type	Female RP-SMA	

The FLIR A-Series cameras are designed for configuration to your specific needs. To learn more about the Smart Sensor Configuration options, please visit: www.flir.com/a400-a700-series

*Optional feature

CORPORATE HEADQUARTERS
FLIR Systems, Inc.
27700 SW Parkway Ave.
Wilsonville, OR 97070
USA
PH: +1 866.477.3687

LATIN AMERICA
FLIR Systems Brasil
Av. Antonio Bardella, 320
Sorocaba, SP 18085-852
Brasil
PH: +55 15 3238 8070

NASHUA
FLIR Systems, Inc.
9 Townsend West
Nashua, NH 03063
USA
PH: +1 866.477.3687

CANADA
FLIR Systems, Ltd.
3430 South Service Road, Suite 103
Burlington, ON L7N 3J5
Canada
PH: +1 800.613.0507



Emitec Messtechnik AG
Birkenstrasse 47
6343 Rotkreuz

+41 41 748 60 10
info@emitec.ch
www.emitec-industrial.ch



Emitec Group 
#1 in Test & Measurement, worldwide.



The World's Sixth Sense®